

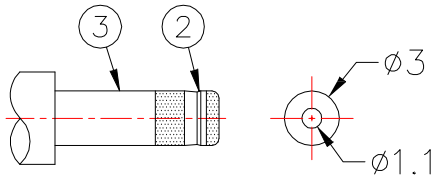
*MATERIAL

- CENTRE PIN : BRASS
- TERMINAL 1 : BRASS
- TERMINAL 2 : PHOSPHOR BRONZE
- TERMINAL 3 : PHOSPHOR BRONZE
- HOUSING : PA6T

SPECIFICATION

- Rating : DC 16V 3.5A
- Contact resistance : $\leq 50m\Omega$
- Insulation resistance : $\geq 100M\Omega$
- Withstand voltage : 500VAC
- Insertion and extraction force : 3-30N
- life test : 5,000 cycles

DC MATE PLUG



PCB LAYOUT
(TOP VIEW)

MODEL NO.	DC-082H-2-1.0
SCHEMATIC	
CENTER PIN	1mm

CONTACT 建倚科技股份有限公司
CONTACT TECHNOLOGY CORP.

TOLERANCE UNLESS OTHERWISE STATED :
Up to 5 ±0.2
Above 5 ~ 15 ±0.3
Above 15 ~ 30 ±0.4
Above 30 ~ 50 ±0.5
Angle ±0.3

3RD. ANGEL'S



UNITS

MM

DRAWN BY:	DATE	MAT'L	TITLE	JACK
Jack Lu	08/12/14		MODLE	DC JACK
CHECKED BY:	DATE	SCALE	DWG NO.	DC-082H-2-1.0
Jacky Chen	08/12/14	1 : 1	PART NO.	DC-082H-2-1.0
APPROVED BY:	DATE	SHEET NO.	1 of 1	
Tony Kao	08/12/14			

2	新增SPEC	Jack	081214
1	料號更新	FrankWu	072412
ITEM NO.	DESCRIPTION	DRAWN	DATE