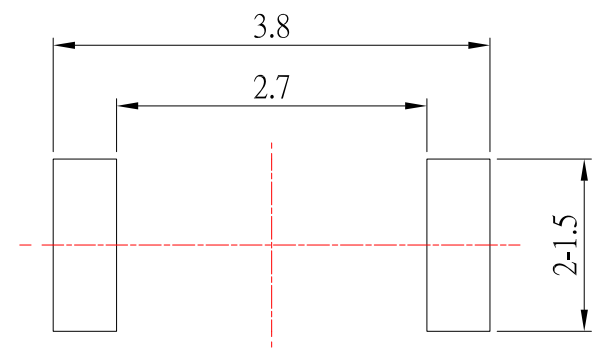
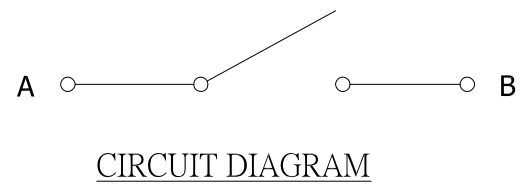
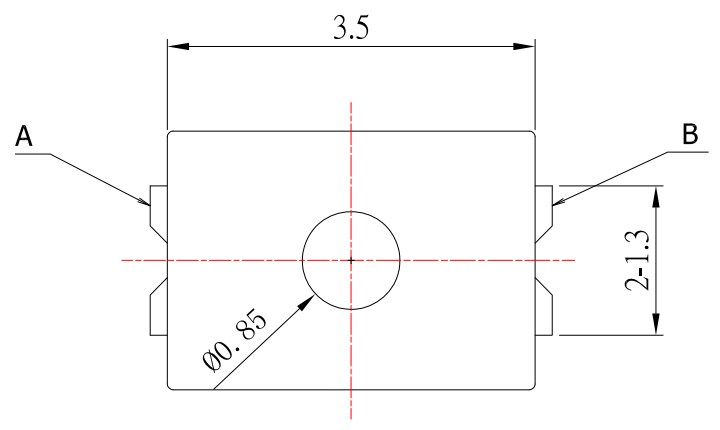
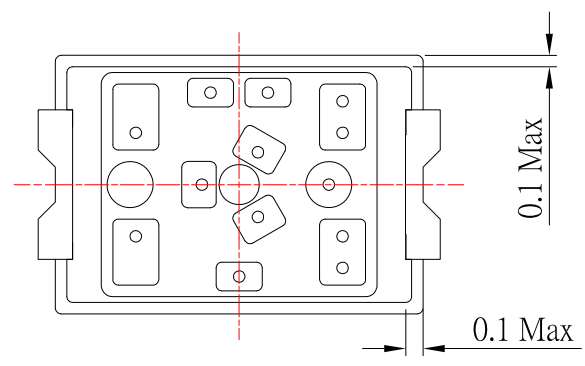
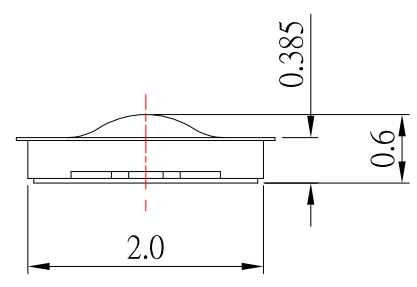
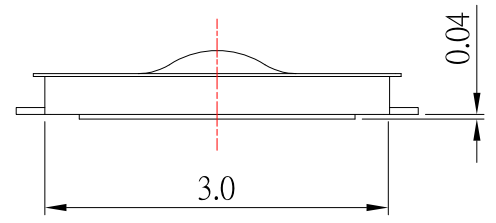


IP67



P.C.B LAYOUT MOUNTING PATTERN



SPECIFICATIONS

Rating	DC 15V 20mA			
Contact Resistance	500mΩ Max.			
Travel	0.13 ± 0.1mm			
Operating Force	3	240 ± 70gf	4	330 ± 70gf
Operating Life (cycles)	500,000		300,000	

CONTACT 建倚科技股份有限公司
CONTACT TECHNOLOGY CORP.

TOLERANCE UNLESS OTHERWISE STATED:
 Up to 5 ±0.2
 Above 5 ~ 15 ±0.3
 Above 15 ~ 30 ±0.4
 Above 30 ~ 50 ±0.5
 Angle ±0.3

3RD. ANGEL'S



UNITS MM

DRAWN BY:	DATE	MAT'L	TITLE	SWITCH
Jack Lu	09/14/17		MODLE	TACT SWITCH(内置按钮)for Waterproof
CHECKED BY:	DATE	FINISH	SCALE	1 : 1
Jacky Chen	09/14/17		DWG NO.	TS-A29A-x-S048
APPROVED BY:	DATE	SHEET NO.	PART NO.	TS-A29A-x-S048
Tony Kao	09/14/17	1 of 1		

ITEM NO.	DESCRIPTION	DRAWN	DATE
3	IP67標示位置更新	Jack	091417
2	更新尺寸	Jack	081816
1	新增Water-proof level	Jack	081616