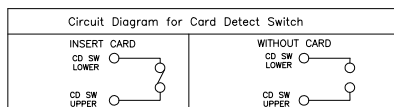
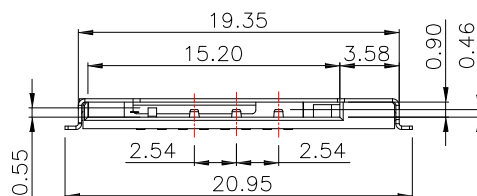


**P.C.B LAYOUT MOUNTING PATTERN  
TOP VIEW**



CONNECTOR TERMINAL NO.	Pin NO.
Pin 1	VCC:PWR SIGNAL AND GND
Pin 2	RST:RESET SIGNAL
Pin 3	CLK:CLOCKING SIGNAL
Pin 5	GND:PWR SIGNAL AND GND
Pin 6	VPP:PROGRAMMING VOLTAGE
Pin 7	I/O:SERIAL DATA INPUT/OUTPUT



**MATERIALS:**

1. HOUSING : THERMOPLASTIC (UL 94V-0).
2. TERMINAL : COPPER ALLOY
3. SHELL : SUS

**Finish:**

1. Finish: CONTACT: PLATED GOLD IN MATING AREA ;  
GOLD PLATED ON SOLDER BALLS ;  
NICKEL UNDER PLATED OVERALL
2. SHELL: NICKEL UNDER PLATED SURFACE LAYER

**SPECIFICATION:**

1. CURRENT RATING : 0.5 A. MAX.
2. DIELECTRIC WITHSTANDING VOLTAGE : 500V AC R.M.S. FOR 1 MINUTE.
3. INSULATION RESISTANCE : 1000MΩ MIN.
4. CONTACT RESISTANCE : 100mΩ MAX.
5. OPERATING TEMPERATURE : -40°C TO +85°C.

**CONTACT** 建倚科技股份有限公司  
**CONTACT TECHNOLOGY CORP.**

TOLERANCE UNLESS OTHERWISE STATED:  
Up to 5 ±0.2  
Above 5 ~ 15 ±0.3  
Above 15 ~ 30 ±0.4  
Above 30 ~ 50 ±0.5  
Angle ±0.3

3RD. ANGEL'S



UNITS MM

DRAWN BY:	DATE	MAT'L	TITLE	CONNECTOR
Jack Lu	06/20/17			
CHECKED BY:	DATE	FINISH	MODLE	SIM Card Connector 6pin push / 帶偵測pin
Jacky Chen	06/20/17			
APPROVED BY:	DATE	SCALE	DWG NO.	SIM-510010615S-S312
Tony Kao	06/20/17	1 : 1	PART NO.	SIM-510010615S-S312
		SHEET NO.	1 of 1	
				SIZE A4
				VER R1

ITEM NO.	DESCRIPTION	DRAWN	DATE
1	更新尺寸	Jack	062017