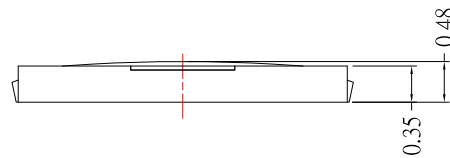
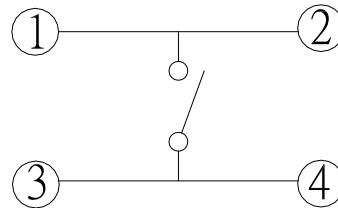
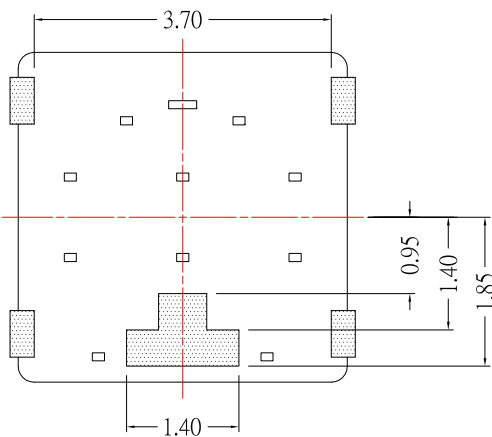


P.C.B LAYOUT MOUNTING PATTERN



SPECIFICATIONS

Rating	DC 15V 20mA							
Circuit	1C - 1P							
Contact Resistance	100mΩ Max.							
Travel	0.2 ± 0.1mm							
Operating Force	0	100 ± 50gf	2	160 ± 50gf	3	250 ± 50gf	4	350 ± 50gf
Operating Life (cycles)	300,000				100,000			



CIRCUIT DIAGRAM

4	CASE	LCP	1	
3	TERMINAL	PHOSPHOR BRONZE	4	Ag PLATED
2	CONTACT	STAINLESS STEEL	1 or 2	Ag PLATED
1	DUST COVER	PI FILM	1	
No	PARTS NAME	MATERIAL	QTY	FINISH

CONTACT 建倚科技股份有限公司
CONTACT TECHNOLOGY CORP.

TOLERANCE UNLESS OTHERWISE STATED:
 Up to 5 ±0.2
 Above 5 ~ 15 ±0.3
 Above 15 ~ 30 ±0.4
 Above 30 ~ 50 ±0.5
 Angle ±0.3

3RD. ANGEL'S

UNITS MM

DRAWN BY:	DATE	MAT'L	TITLE	SWITCH
Jack Lu	12/29/14			
CHECKED BY:	DATE	FINISH	MODLE	TACT SWITCH
Jacky Chen	12/29/14			
APPROVED BY:	DATE	SCALE	DWG NO.	TS-A98MU-x-S100
Tony Kao	12/29/14	1 : 1	PART NO.	TS-A98MU-x-S100
		SHEET NO.	1 of 1	
				SIZE A4
				VER R1

1	更新圖面及新增尺寸	Jack	122914
ITEM NO.	DESCRIPTION	DRAWN	DATE