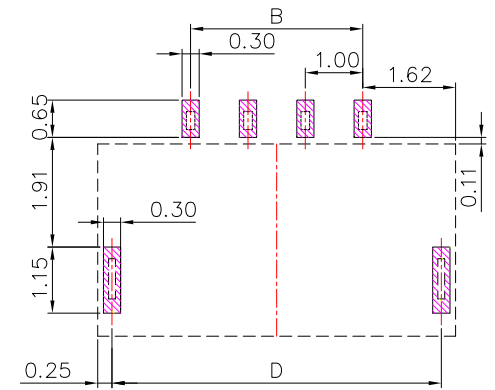
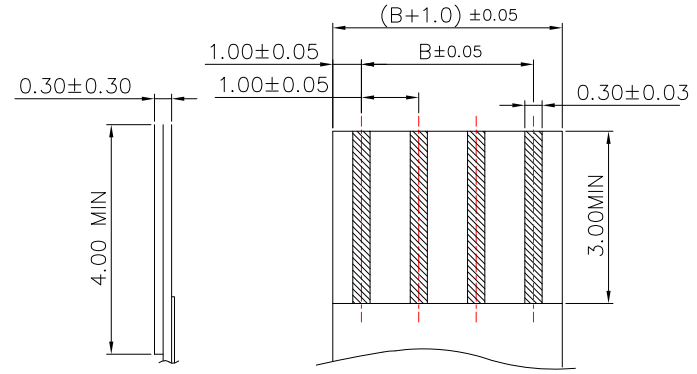
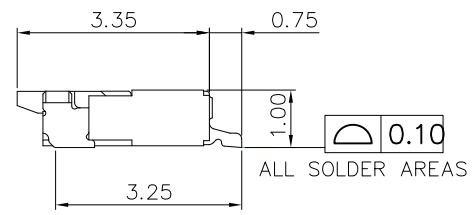
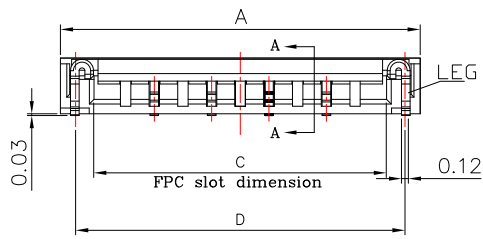


PIN NO.	DIM. A	DIM. B	DIM. C	DIM. D
04	6.27	3.00	5.10	5.74
06	8.27	5.00	7.10	7.74
08	10.27	7.00	9.10	9.74
10	12.27	9.00	11.10	11.74
12	14.27	11.00	13.10	13.74
18	20.27	17.00	19.10	19.74
30	32.27	29.00	31.10	31.74



RECOMMEND PCB LAYOUT



APPLICABLE FFC

NOTES:

- MATERIAL:
 - HOUSING: LCP,UL 94-V0,COLOR:WHITE
 - COVER: LCP,UL 94-V0,COLOR:BROWN
 - CONTACT: PHOSPHOR BRONZE
 - LEG: BRASS
- PLATING:
 - CONTACT: GOLD OR TIN PLATED ON NICKEL OVERALL
 - LEG: TIN PLATED ON NICKEL OVERALL
- RATING:
 - CURRENT RATING: 0.4A AC/DC
 - VOLTAGE RATING: 50V AC/DC
 - TEMPERATURE RANGE: -55°C ~ +85°C

ITEM NO	DESCRIPTION	DRAWN	DATE
5	更新FFC	Jack	090522
4	更新PIN选项	Jack	071822
3	更新FFC尺寸	Jack	081117
2	新增插入深度尺寸	Jack	081117
1	更新材質	Jack	102915

CONTACT 建倚科技股份有限公司
CONTACT TECHNOLOGY CORP.

TOLERANCE UNLESS OTHERWISE STATED	Up to 5 ±0.2	Above 5 ~ 15 ±0.3	Above 15 ~ 30 ±0.4	Above 30 ~ 50 ±0.5	Angle ±0.3°	3RD. ANGEL'S	UNITS	MM
-----------------------------------	--------------	-------------------	--------------------	--------------------	-------------	--------------	-------	----

DRAWN BY:	DATE	MAT'L	TITLE	CONNECTOR
Jack Lu	09/05/22		MODLE	FPC 1.0mm 前掀 H:1.00mm
CHECKED BY:	DATE	FINISH	SCALE	1 : 1
Jacky Chen	09/05/22		DWG NO.	FPC10L-10xx-B-S304
APPROVED BY:	DATE	SHEET NO.	PART NO.	FPC10L-10xx-B-S304
Tony Kao	09/05/22	1 of 1		