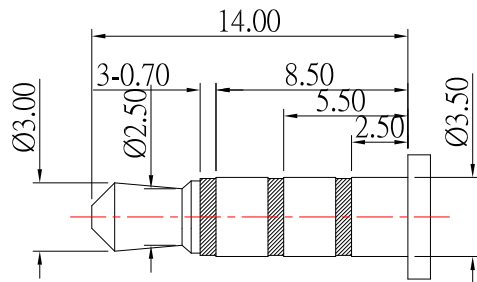
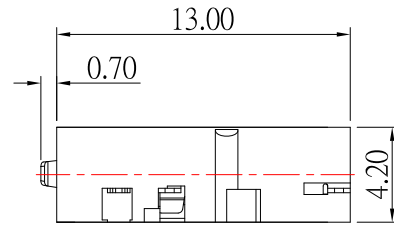
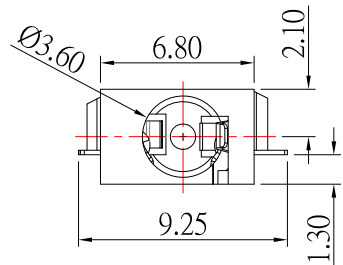


P.C.B LAYOUT
TOP VIEW

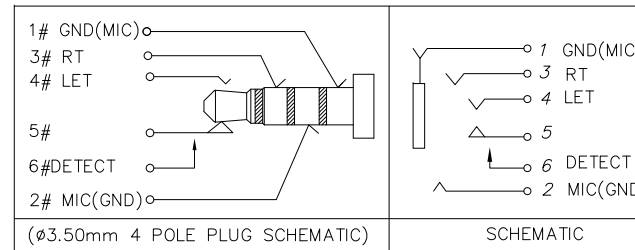
P.C.B LAYOUT
BOTTOM VIEW

SPECIFICATION

- 1.Rating : 12V ; 1.0A ;
- 2.Contact resistance : $\leq 100m\Omega$;
- 3.Insulation resistance : $\geq 100M\Omega$;
- 4.Withstand voltage : 500VAC ;
- 5.Insertion and extraction force : 3-30N;
- 6.life test : 5,000 cycles °



(ø3.50mm 4 POLE PLUG DETAIL DRAWING)



ITEM	PART NAME	Q'TY	MATERIAL
7	SEPARATOR	1	PPA ;COLOR BLACK
6	HOUSING	1	PPA ;COLOR BLACK
5	CONTACT 5#	1	PHOSPHOR BRONZE; NICKEL UNDER PLATING OVERALL,GOLD PLATING ON SOLDER AREA ;GOLD PLATING ON CONTACT AREA
4	CONTACT 4#	1	SUS; NICKEL UNDER PLATING OVERALL,GOLD FLASH PLATING ON SOLDER AREA ;GOLD FLASH PLATING ON CONTACT AREA
3	CONTACT 3#	1	SUS; NICKEL UNDER PLATING OVERALL,GOLD FLASH PLATING ON SOLDER AREA ;GOLD FLASH PLATING ON CONTACT AREA
2	CONTACT 2#	2	SUS; NICKEL UNDER PLATING OVERALL,GOLD FLASH PLATING ON SOLDER AREA ;GOLD FLASH PLATING ON CONTACT AREA
1	CONTACT 1#	1	PHOSPHOR BRONZE; NICKEL UNDER PLATING OVERALL,GOLD PLATING ON SOLDER AREA ;GOLD PLATING ON CONTACT AREA

ITEM NO.	DESCRIPTION	DRAWN	DATE